

# Fix your Fireplace



TRD series

*Amantii*  
Electric Fireplaces

# Content

- How to replace LED light (ember bed light and flame light)
- How to replace flicker motor
- How to replace the PCB board
- How to replace heating element
- How to replace the touch panel
- How to replace the canopy light
- How to replace the signal receiver

# Replace LED light

For ember bed

**Step 1** Unscrew 2 screws from the trim where marked red arrows.



↑ Front view

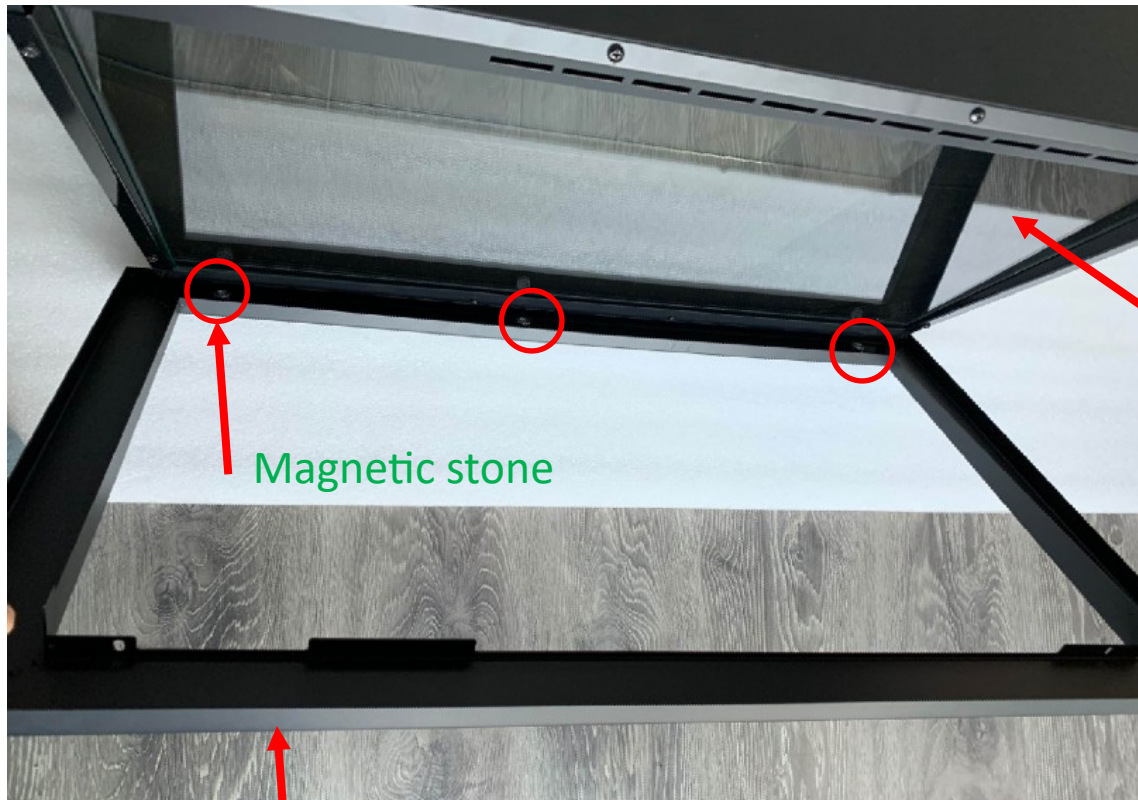


Horizontal view



## Step 2

When the screws are removed, you can take off the trim. Please mind there are magnetic stones fixed at the bottom of the trim connecting the trim and the fireplace.



Magnetic stone

The fireplace

The trim

## Step 3

When the trim is removed, you can take off the front glass panel.







## Step 4

Unscrew the 2 screws on each side to take off the inner side metal piece fixing the ember bed glass panel.



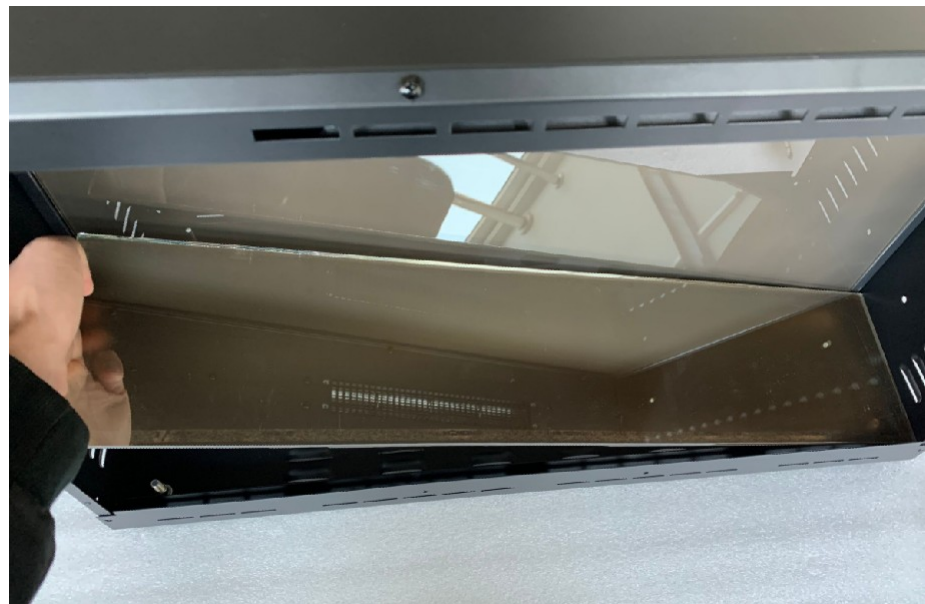
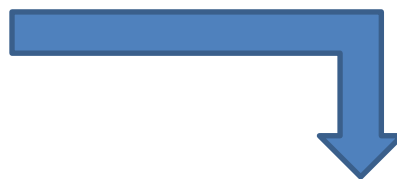
Inner side metal piece





## Step 5

After the inner side metal pieces are removed, you can take off the ember bed glass panel now.



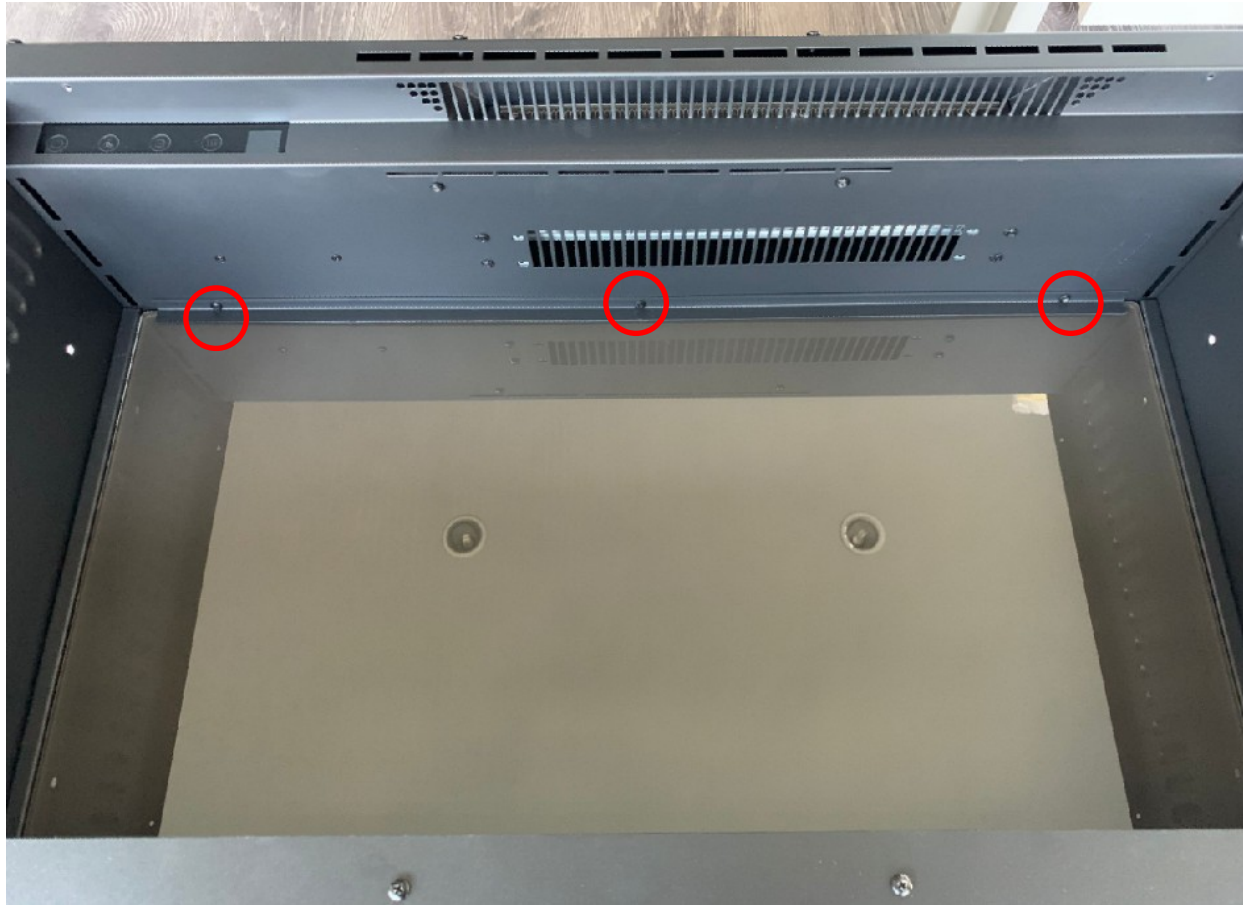
**Step 6** Now you can replace LED light for ember. Unplug to replace it.





LED light for the flame

**Step 7** Unscrew the screws to take off the metal bar fixing the back glass panel.

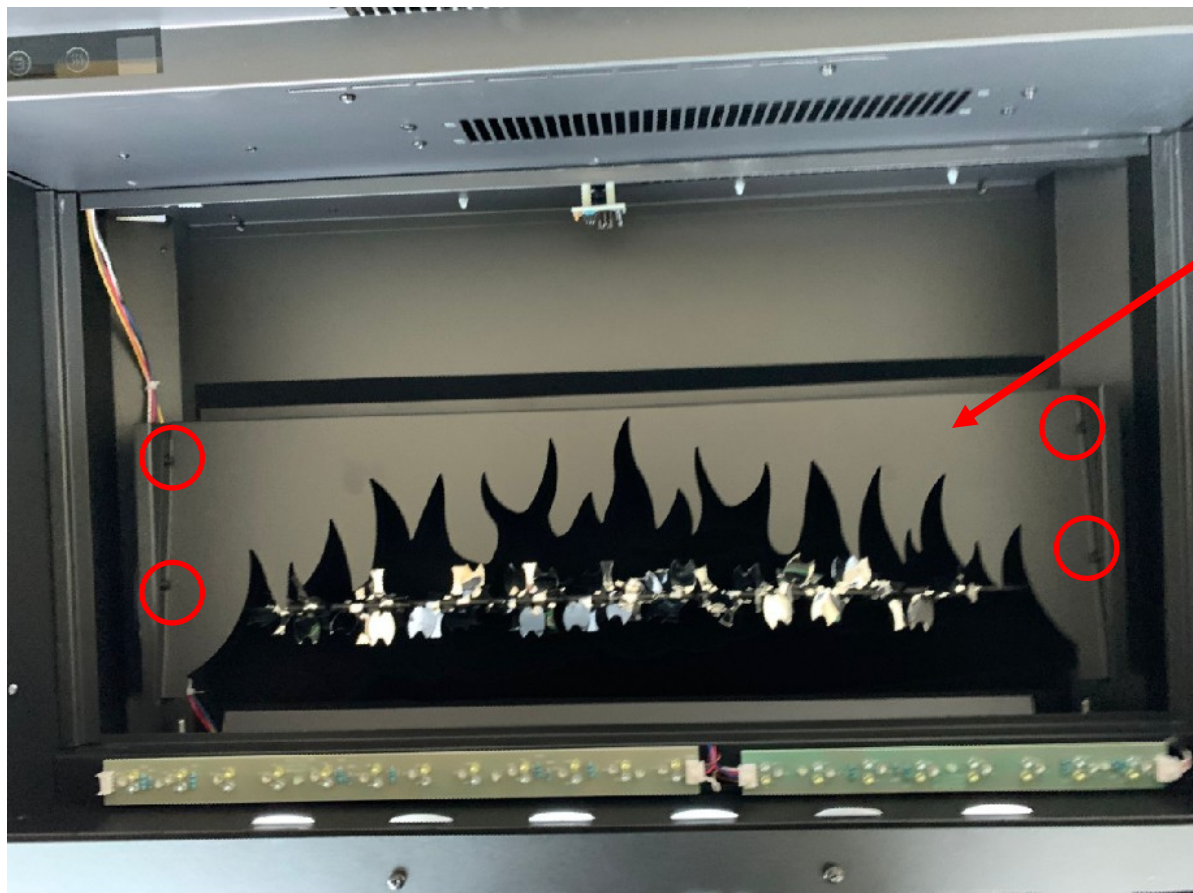


**Step 8** After metal bar is removed, now you can take off the back glass.



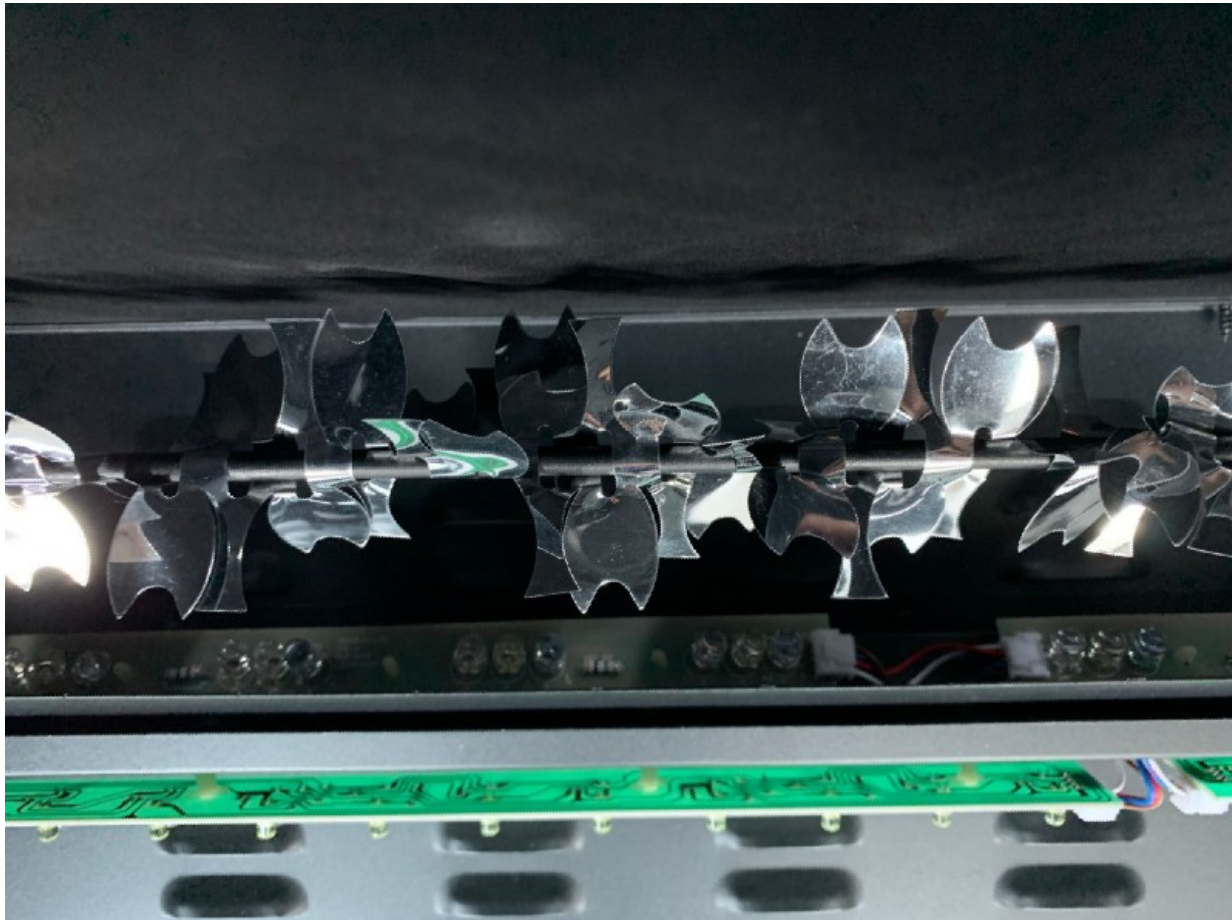
Back glass panel

**Step 9** Unscrew the screws to take off the flame stencil.



Flame stencil

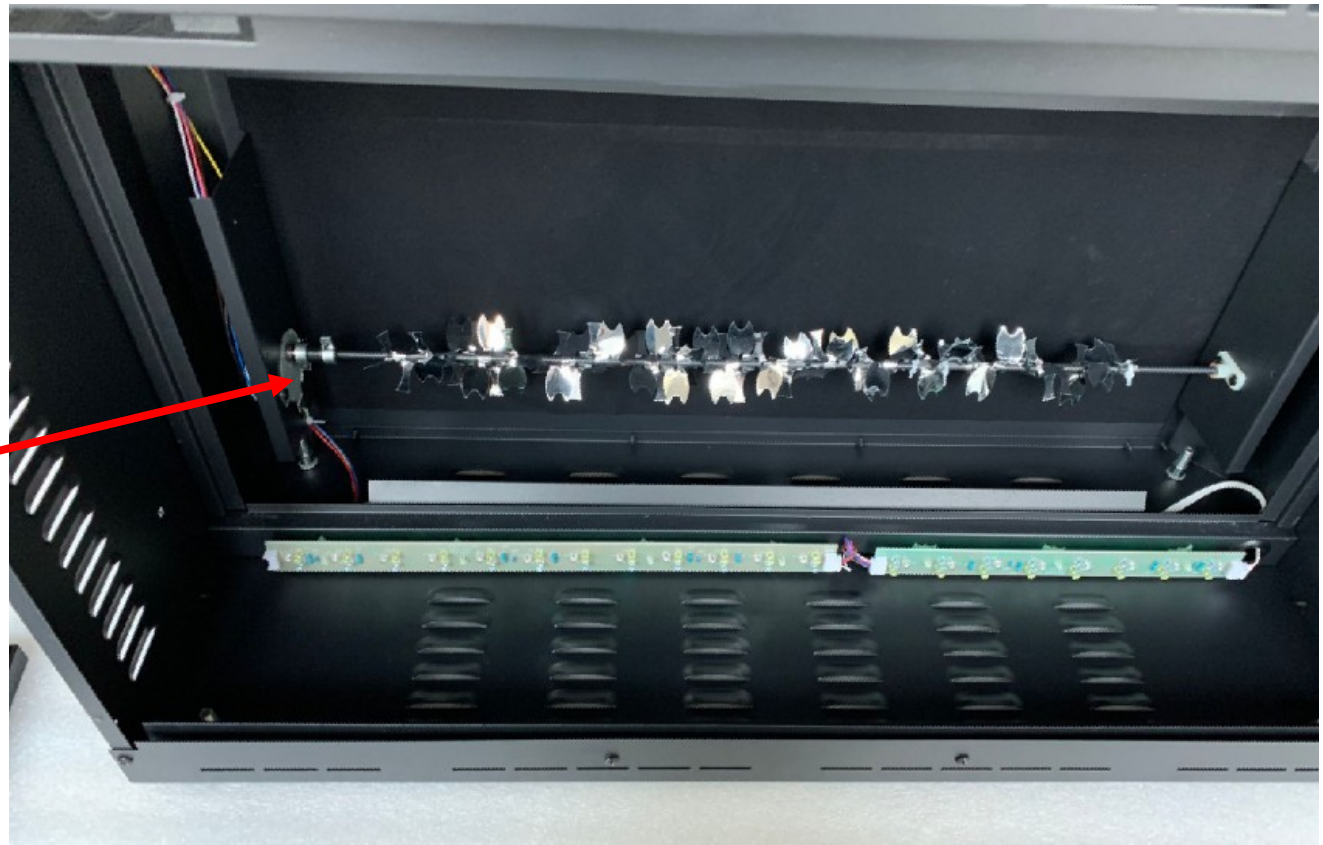
**Step 10** When the flame stencil is removed, you can see the LED light for the flame under it. Now you can replace the LED light for the flame.





# Replace flicker motor for the flame

Please follow Step 1 to 9 in replacing LED light.

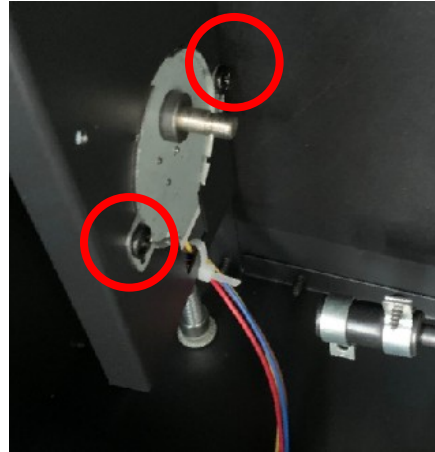


Flicker motor for  
the flame lies  
here



## Step 1

Unscrew the screw and then disconnect the flicker rod from the motor



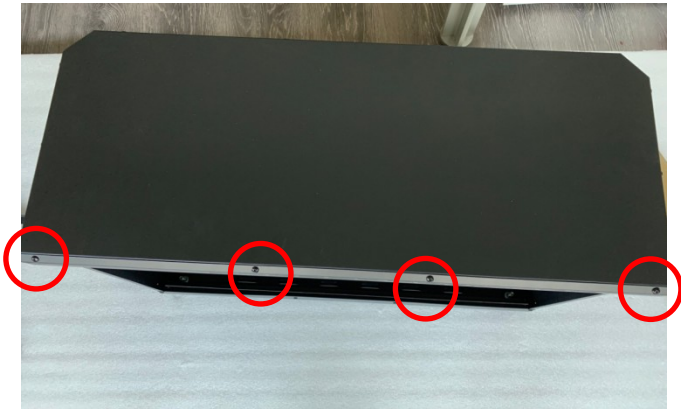
## Step 2

Unscrew the screws to take off the motor from the fireplace

# Replace PCB Board

Please follow Step 1 to 3 in replacing LED light.

**Step 1** Unscrew the screws on 4 sides to take off the top cover.



Front



Back

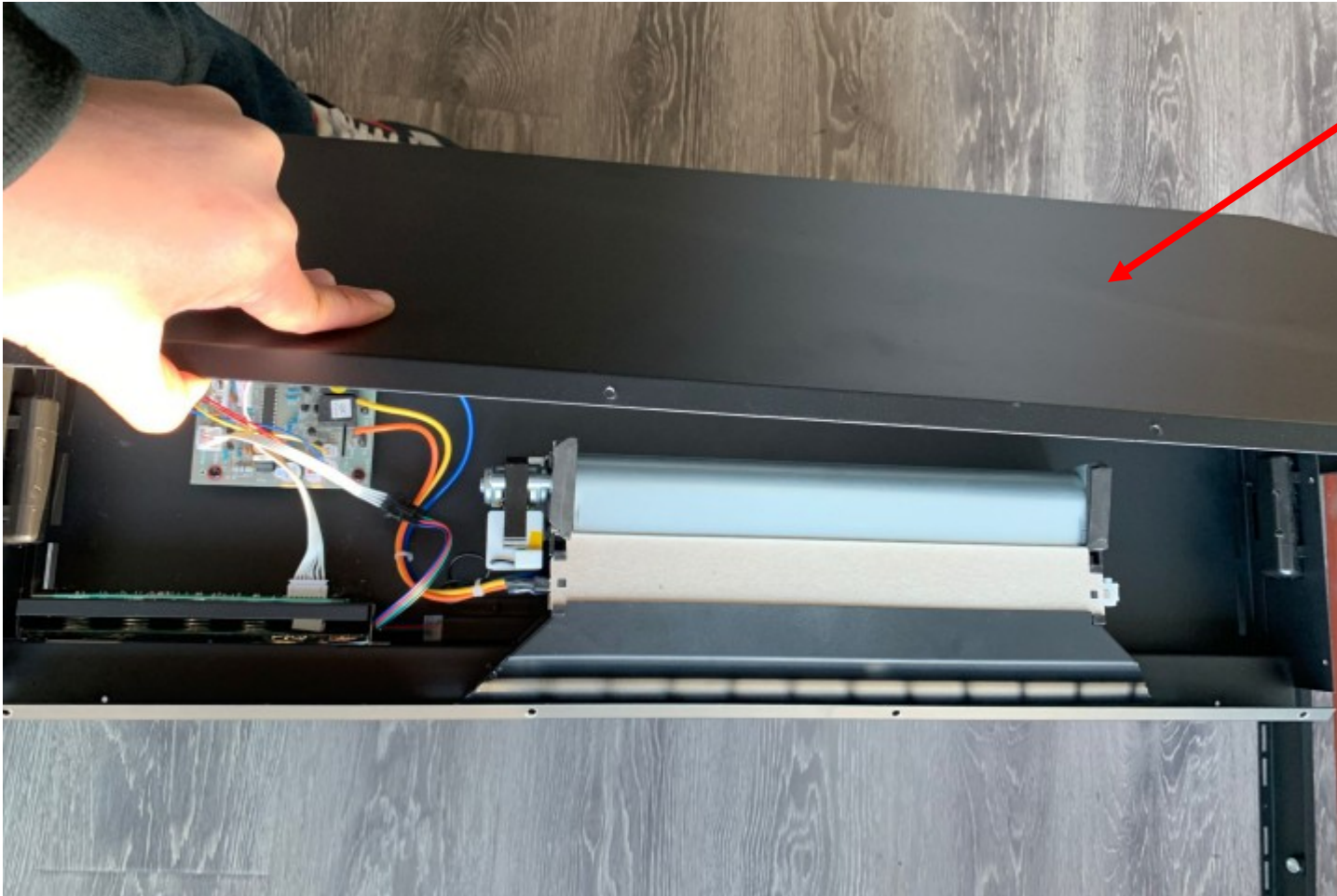


Left



Right

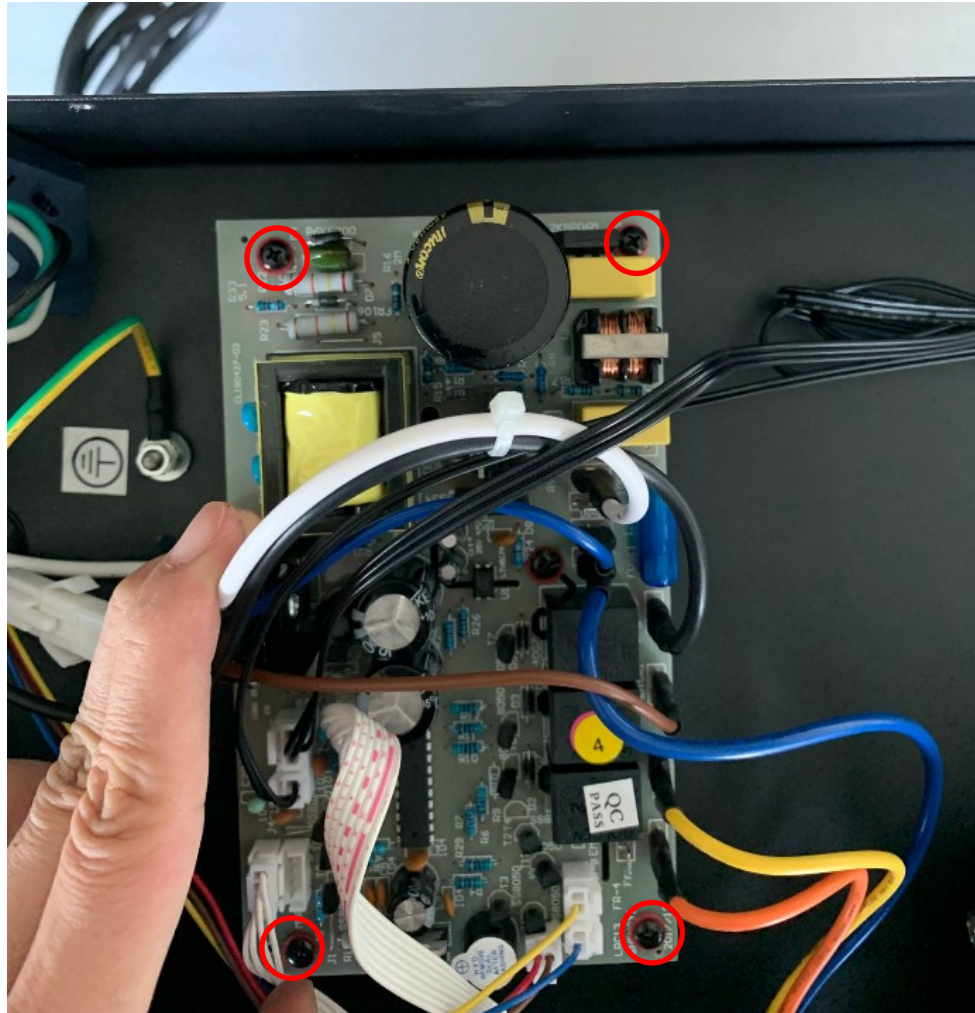
**Step 2** After the screws are removed, you can take off the top cover now.



Top cover

### Step 3

Unscrew the screws to replace the PCB board.





# Replace heating assembly

Please follow Step 1 to 8 in replacing LED light.

**Step 1** Unscrew the screws to disconnect the heating assembly from the fireplace.





**Step 2** Now you can take off the heating assembly from the fireplace. Unscrew the screws to take off the metal pieces from the heating assembly. Unplug to replace the heating assembly.

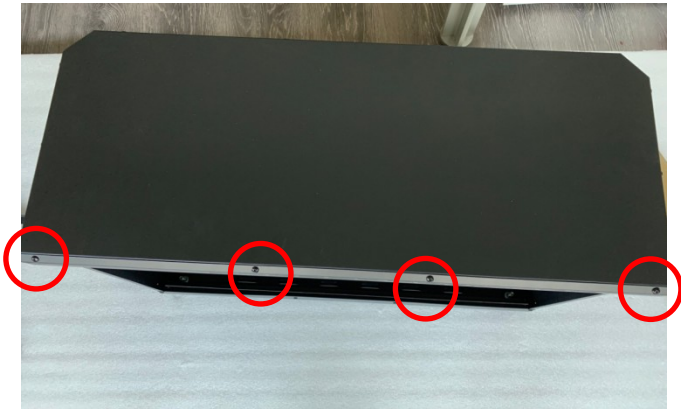
Metal piece



# Replace the touch panel

Please follow Step 1 to 3 in replacing LED light.

**Step 1** Unscrew the screws on 4 sides to take off the top cover.



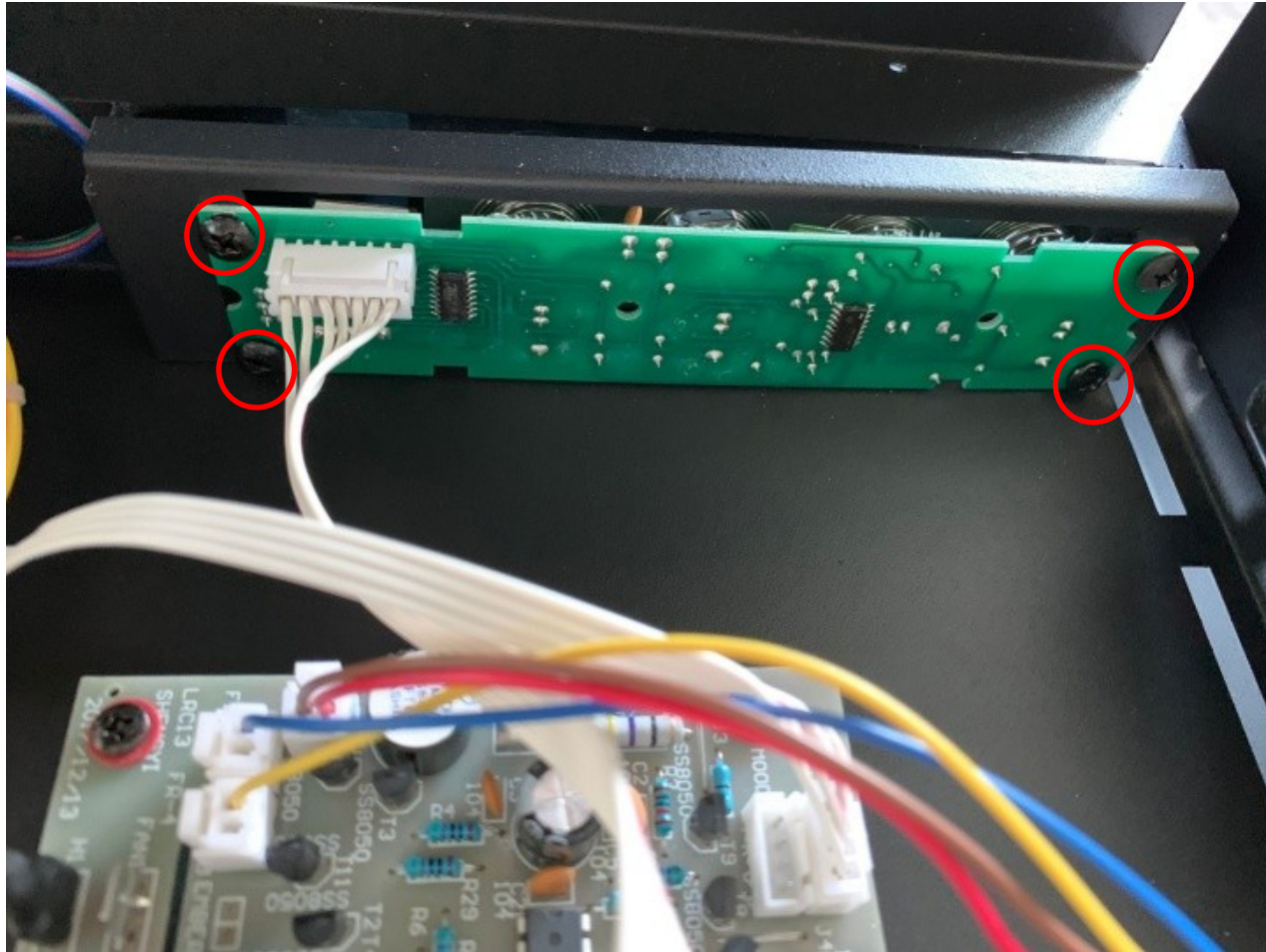
Front



Back

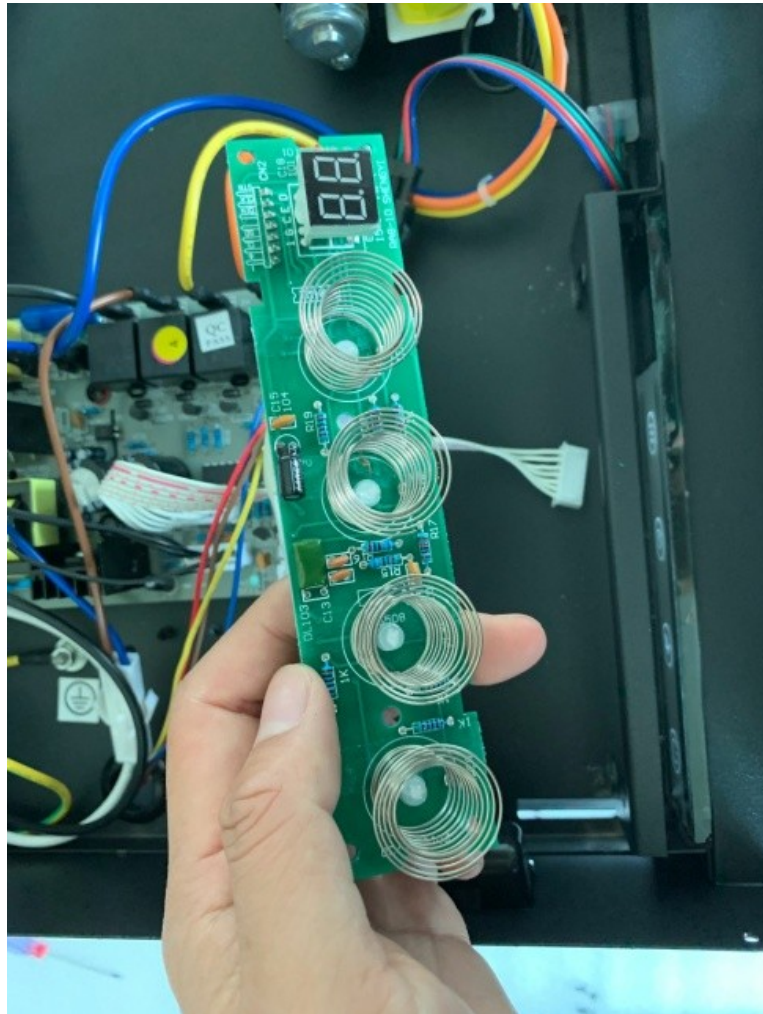


**Step 2** Unscrew the screws take off the fireplace.





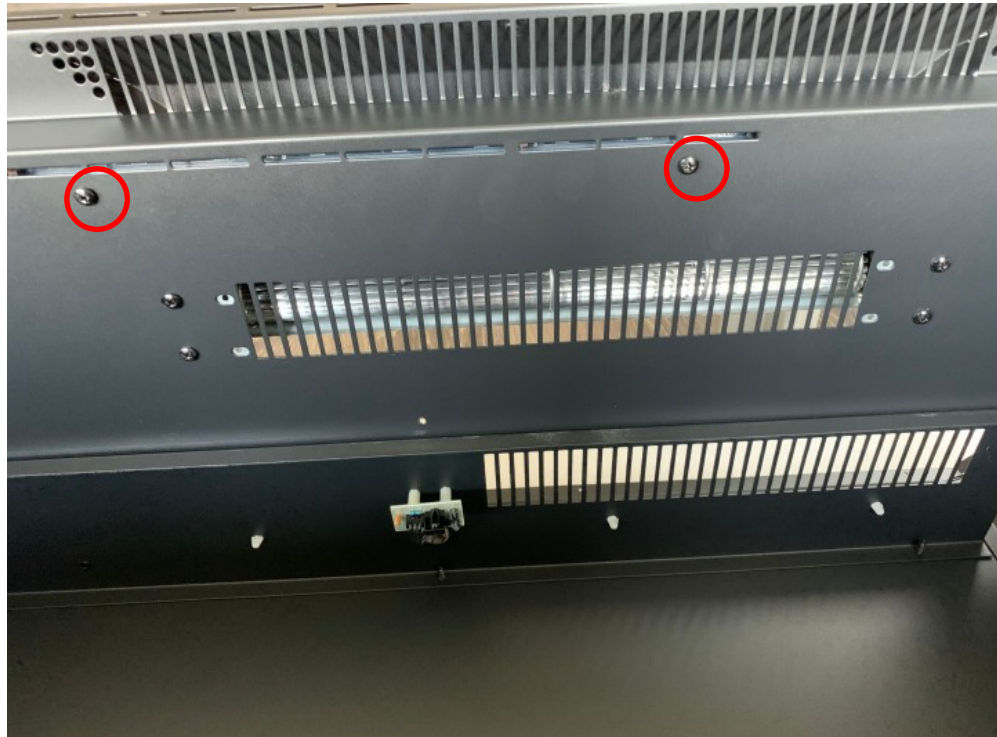
### Step 3 Unplug to replace the touch panel.



# Replace the canopy light

Please follow Step 1 to 8 in replacing LED light.

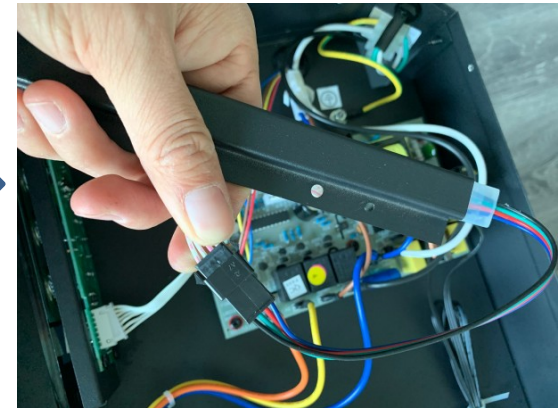
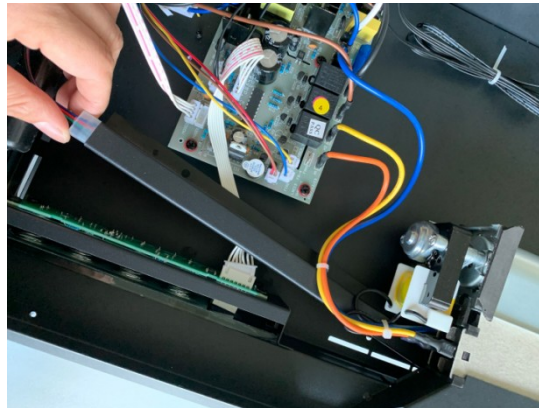
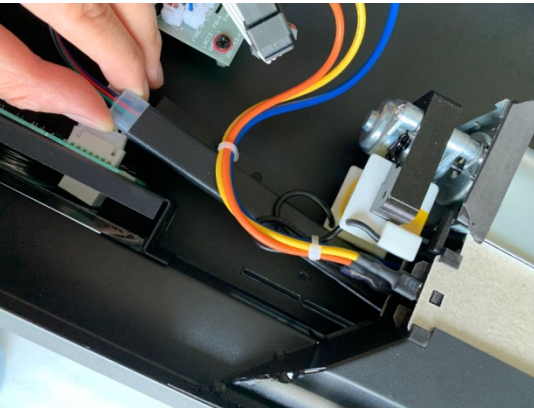
**Step 1** Unscrew the screws to disconnect the canopy light from the fireplace.





## Step 2

Pull the canopy light out  
under the heating assembly

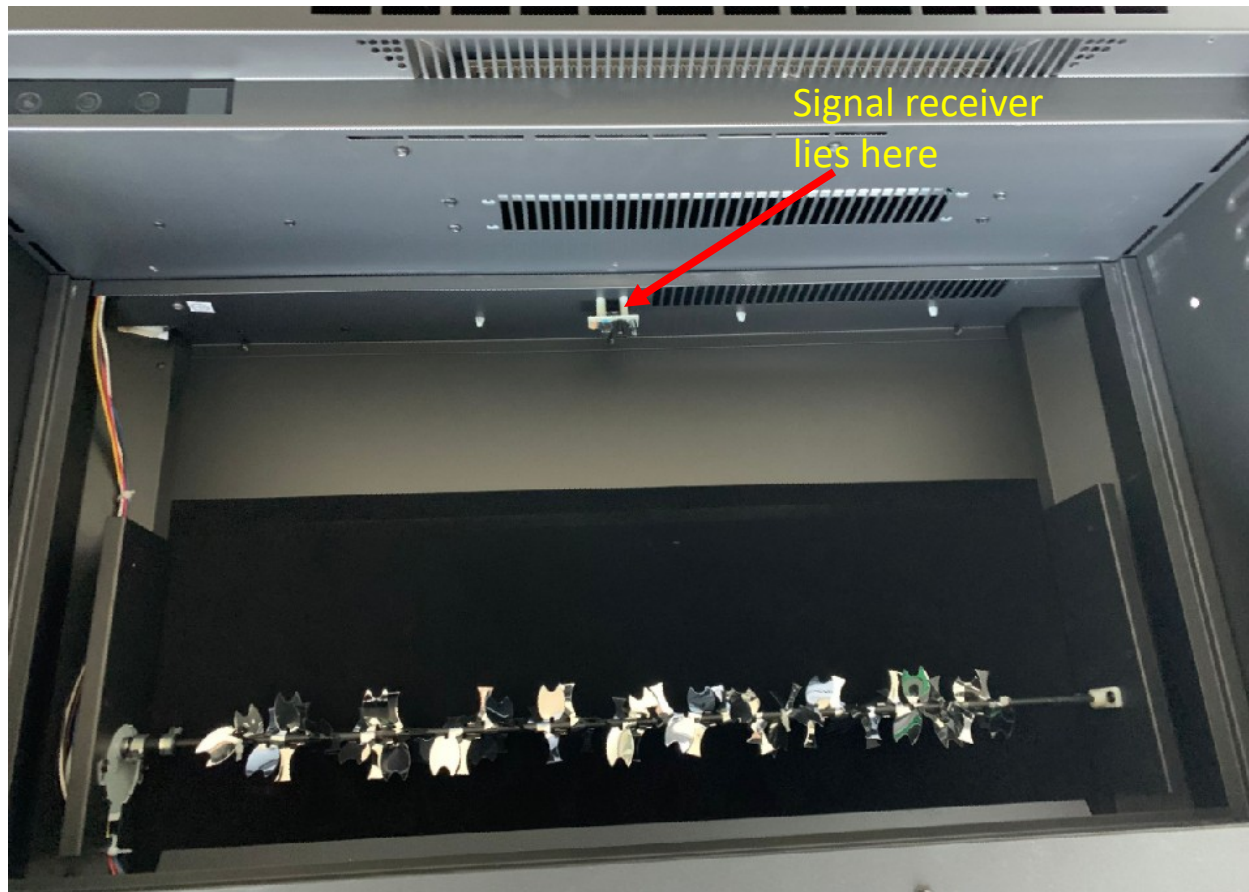


## Step 3

Unplug to replace the  
canopy light

# Replace the signal receiver

Please follow Step 1 to 8 in replacing LED light.



## Step 2 Unscrew the screws



## Step 3 Plug to replace the signal receiver

