

# Symmetry Bespoke Repair Manual



*Amantii*  
Electric Fireplaces

# SAFETY FIRST

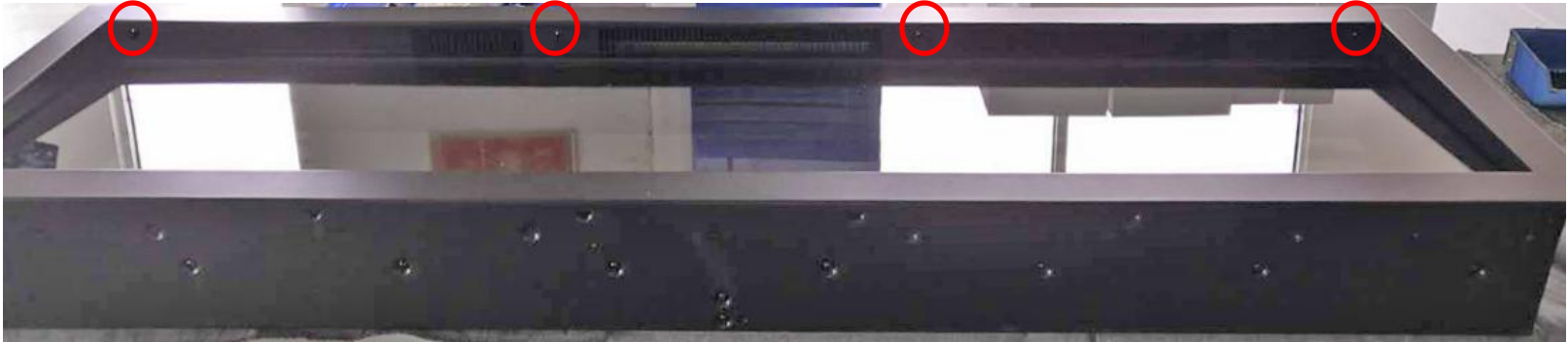
TO AVOID ANY ELECTRICAL SHOCK OR POTENTIAL DAMAGE TO THE UNIT REMEMBER TO TURN THE POWER OFF TO THE UNIT BEFORE ATTEMPTING TO REMOVE OR INSTALL ANY PARTS.

# Table of Content

- [How to replace LED light](#)
- [How to replace flicker motor](#)
- [How to replace heating element](#)
- [How to replace the circuit board](#)
- [How to replace the AC adapter](#)
- [How to replace the canopy light](#)

# Replacing the LED lights

Replacing the ember bed LED lights



**Step 1** Remove Trim - remove the screws circled in red to safely remove the trim. Screws will be needed to reinstall the trim.

Please note that there are magnetic stones on the bottom of the fireplace that attaches the trim to hold the bottom face in place.



Trim

Magnetic stone

**Step 2** After the trim has been removed, the front glass panel can be removed.



# Step 3

Remove steel side panels. The steel side panels hold the log in place. Remove the 4 screws circled in red to remove the side panels. Screws will be reused to reattach the steel side panels. The media now be removed from the unit once the side panels have been removed.



The steel panels



# Step 4

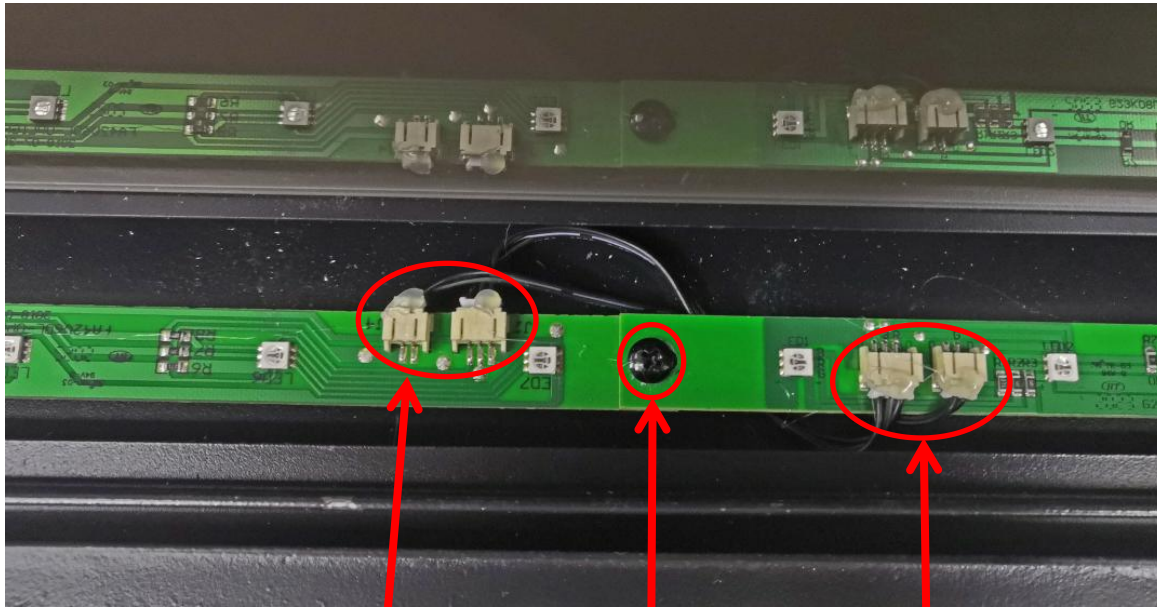
After the steel panels have been removed, the ember bed glass panel can carefully be removed by lifting one end up and then out. The ember bed LED strips are located below it. Please handle the piece of glass with care to avoid damage to the glass.





# Step 5

The LED strips are held in place with screws and are connected to the other strips or to the end using a molex connector. Unscrew the screws of the failed LED strip and unplug the molex connector to replace it with a new one.



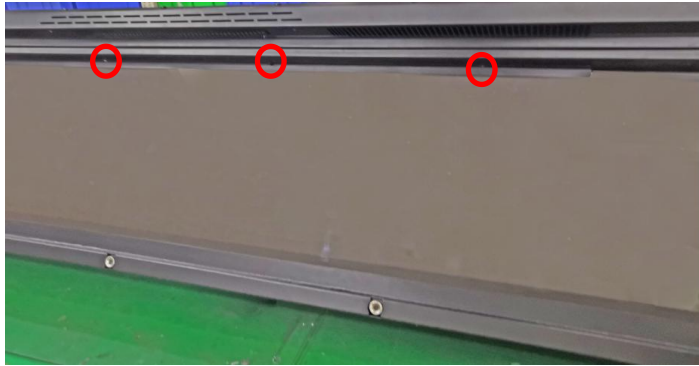
Unplug

Unscrew

Unplug

# Replacing the Flame LED light

Follow STEP 1 to 4 from Replacing the Ember Bed LED light.



**Step 1** Remove the screws circled in red to remove the steel bar used to hold the flame effect glass to the unit. Remove steel bar from unit. The flame effect glass can now be removed from the unit.

## Step 2

Removing the flame effect steel panel. To remove the panel remove the screws circled in red on the unit, as shown in the diagram. Remove the panel and set aside.



Zoomed View



Zoomed View

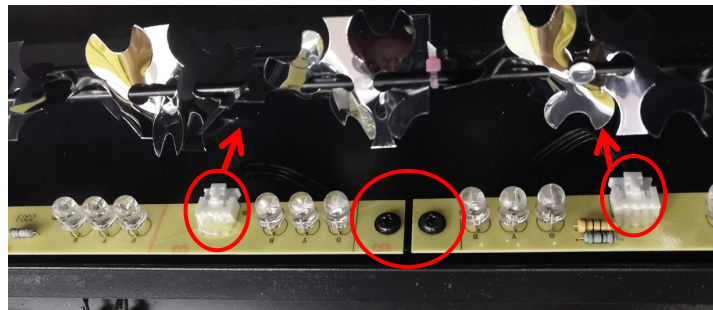


Zoomed View

After the flame effect steel panel has been removed, the unit should be as shown in the diagram



**Step 3** The Flame LED strips are held in place with screws and are connected to the other strips or to the end using a molex connector. Unscrew the screws of the failed LED strip and unplug the molex connector to replace it with a new one.



# Replacing the flicker motor

Follow STEP 1 to 2 in Replace Flame LED light, you come to here. After the flame effect steel panel's been removed, you can see the flame motor on the left end.

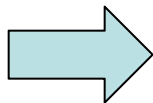
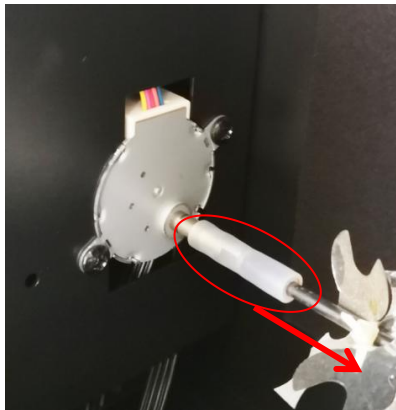




# Steps to remove Flicker Motor

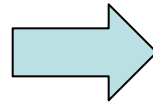
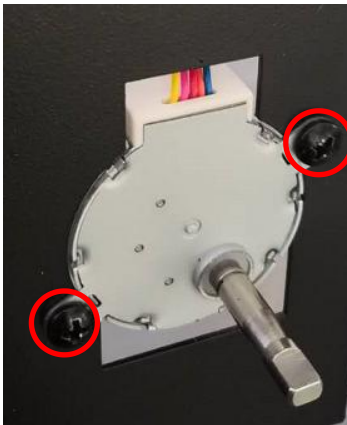
## Step 1

Remove the reflector from the fireplace



## Step 2

Remove the 2 screws circled in red to remove the motor from the fireplace.



## Step 3

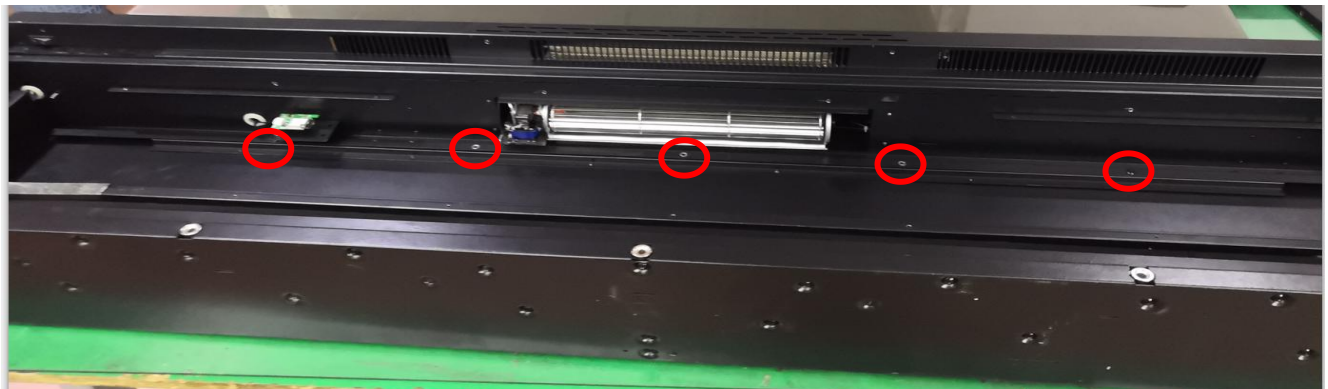
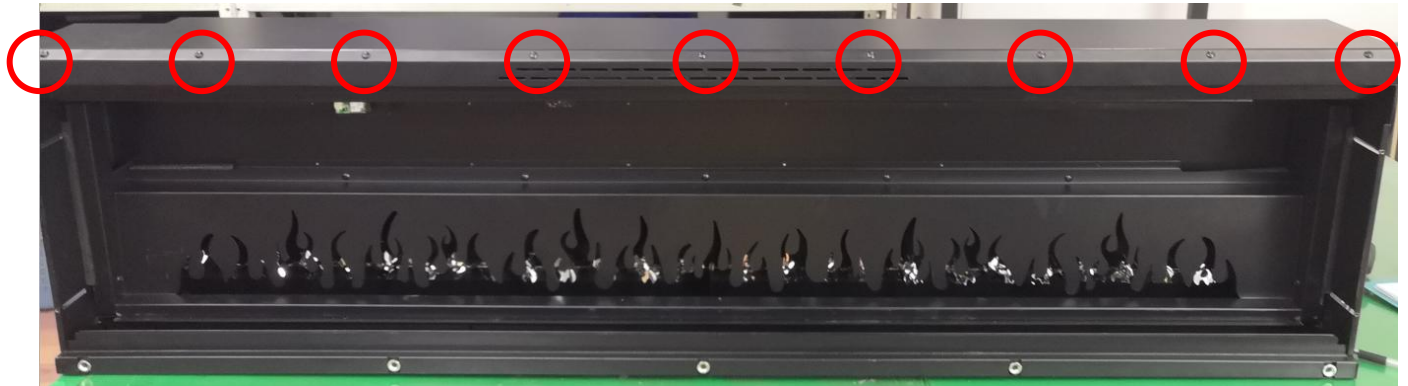
The motor is connected using spade connectors. Carefully disconnect the motor and replace.

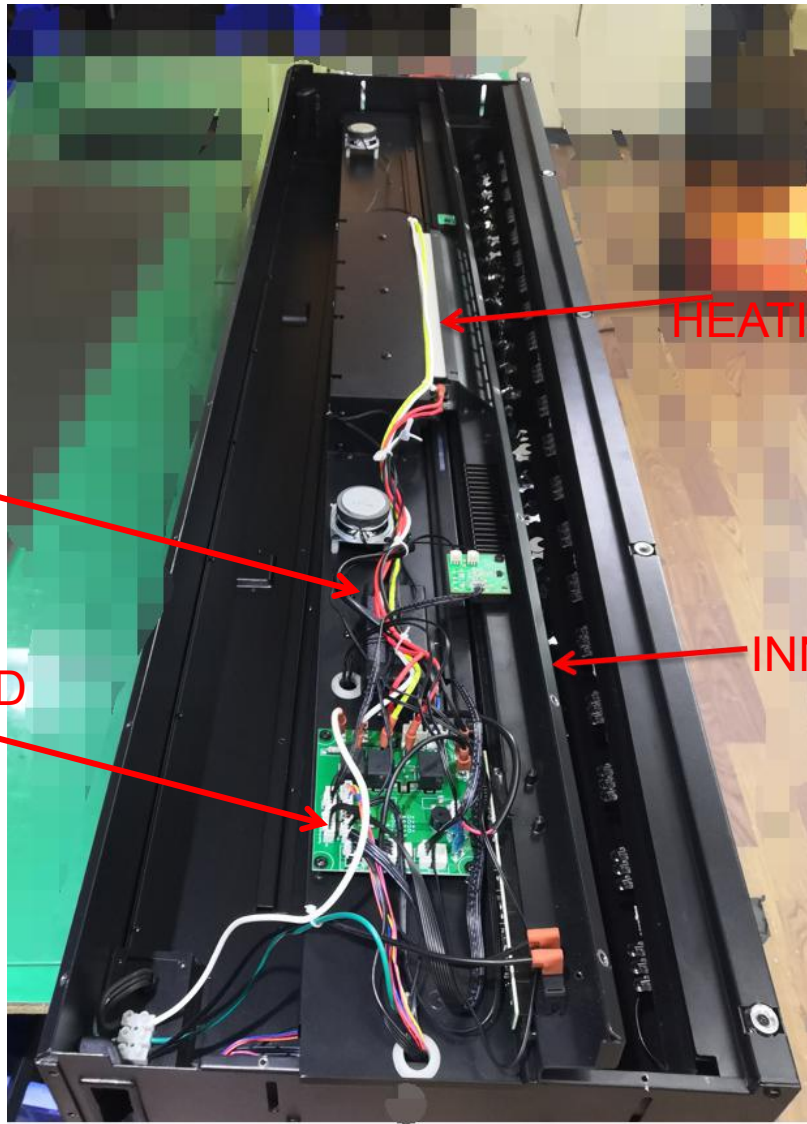


# Replacing the heating element

Follow STEP 1 in Replace Flame LED light.

**Step 1** Remove the screws circled in red to take off the inner top panel. The heating element, circuit board, canopy light and signal receiver are all located here.





HEATING ELEMENT

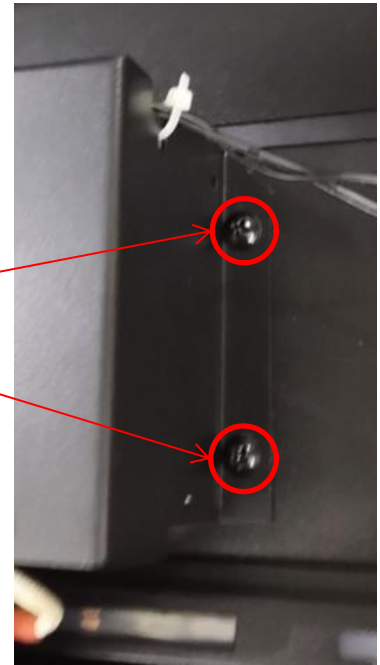
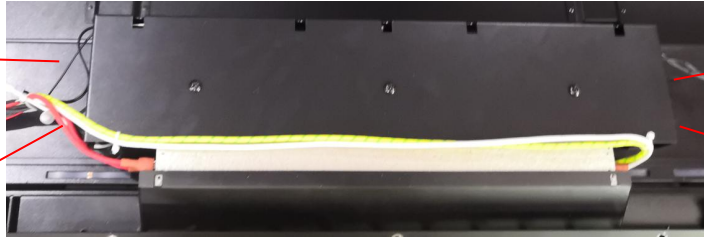
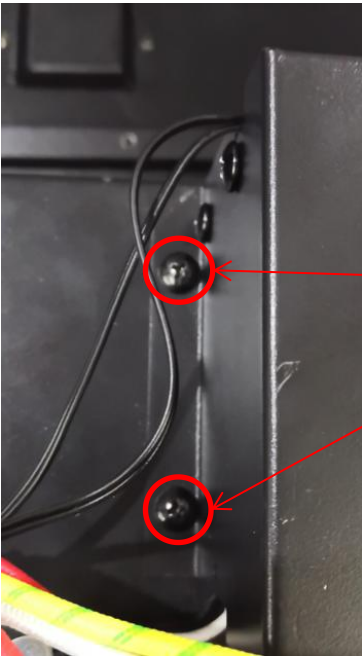
AC ADAPTER

INNER TOP PANEL

CIRCUIT BOARD

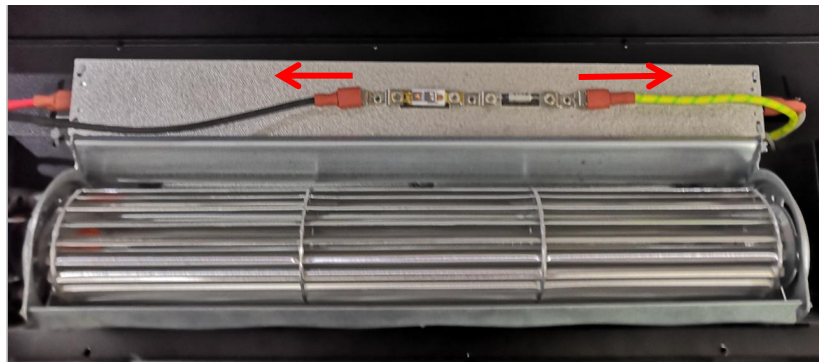
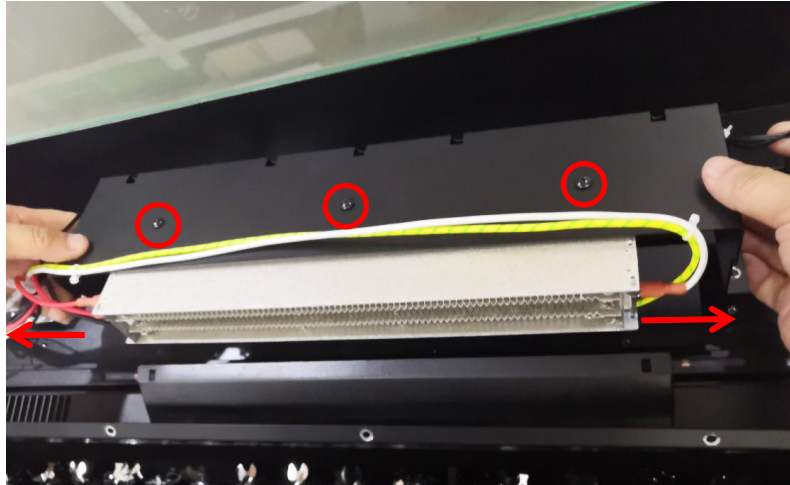


**Step 2** Remove the screws circled in red to take off heating assembly from the inner top panel.



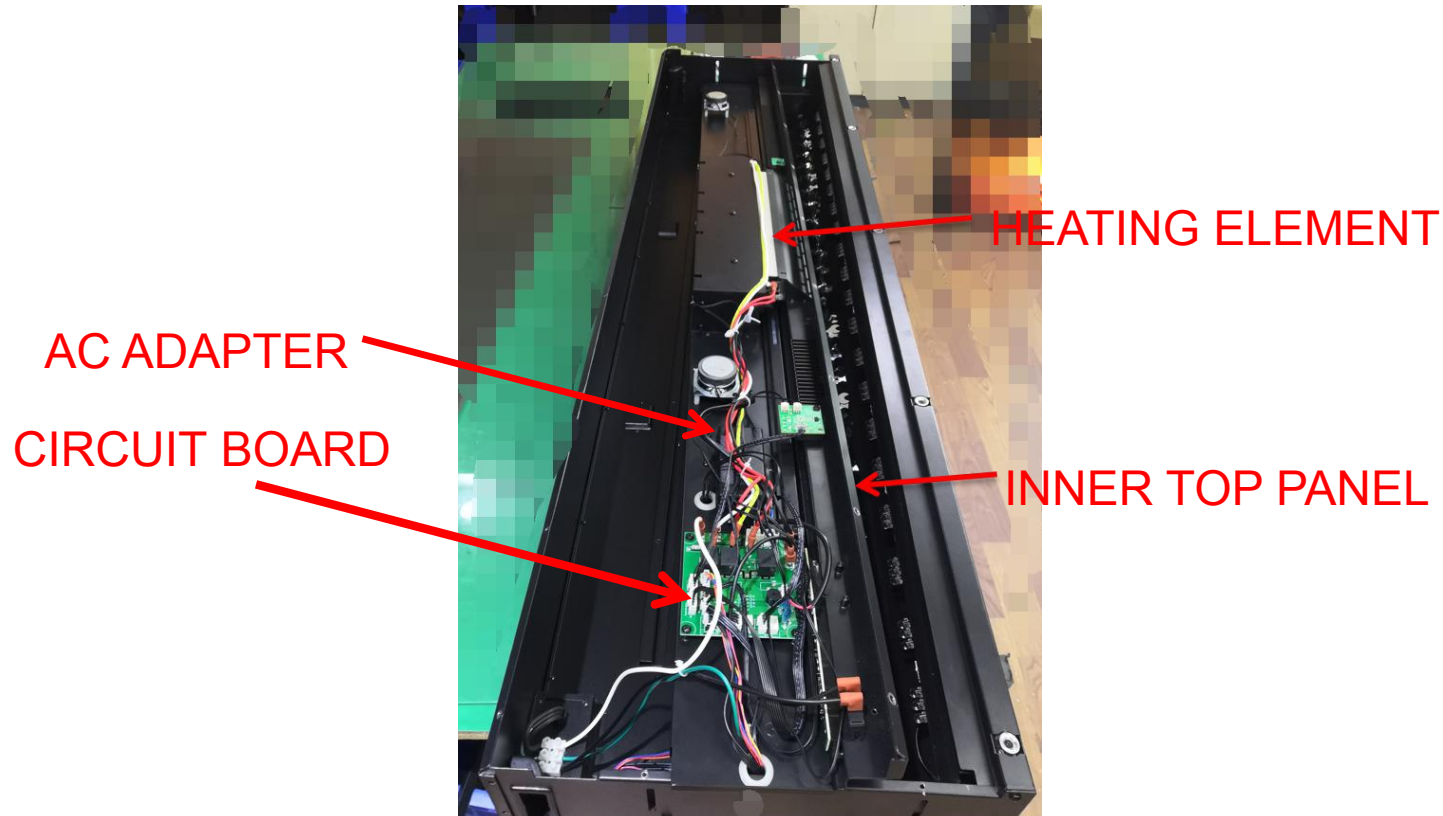
# Step 3

Remove heater brackets from the heater by removing the screws circled in red. Unplug the heater and replace it with a new heater.



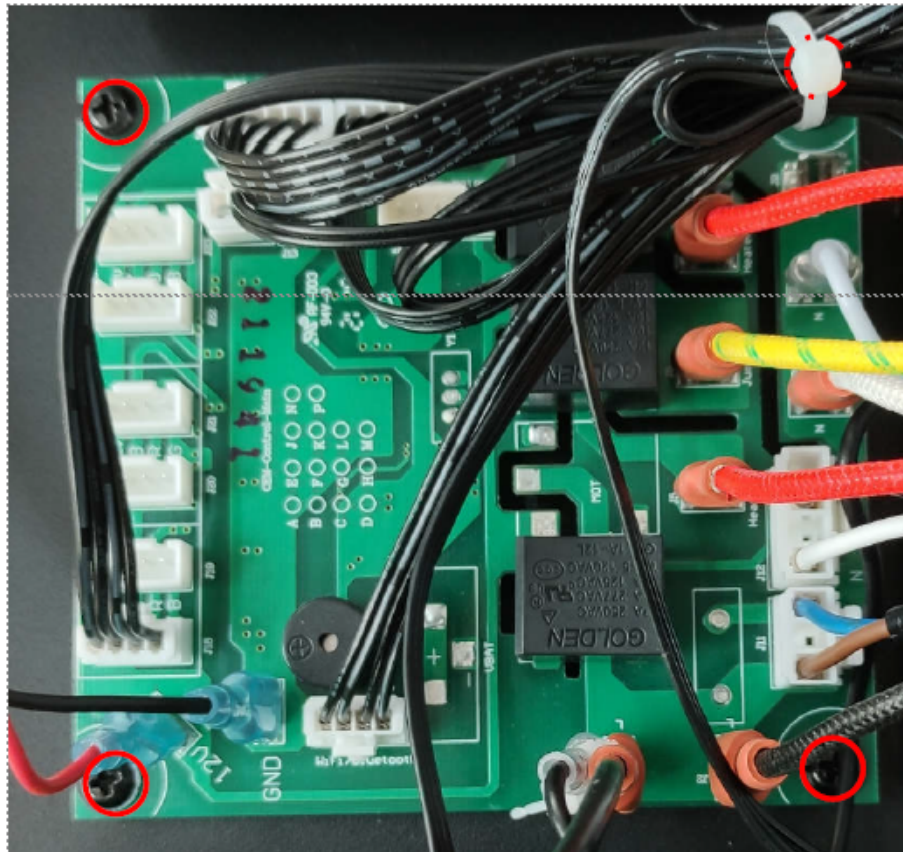
# Replacing the circuit board

Follow STEP 1 in Replace the heating element.



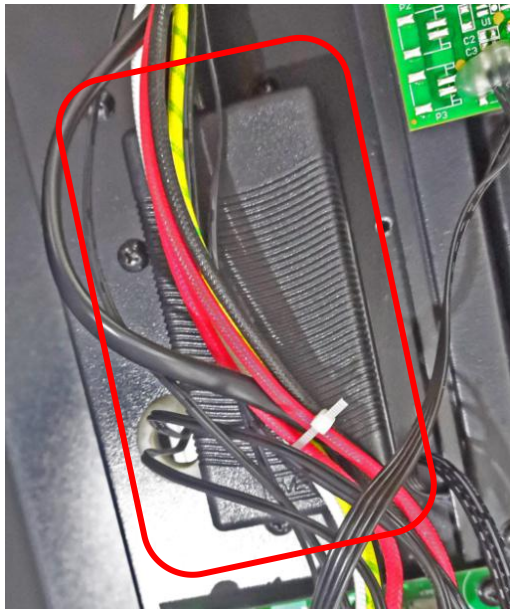
# Step 1

Remove the 4 screws circled in red and replace the failed circuit board with a new one. Secure the new board to the inner top using the same 4 screws previously removed

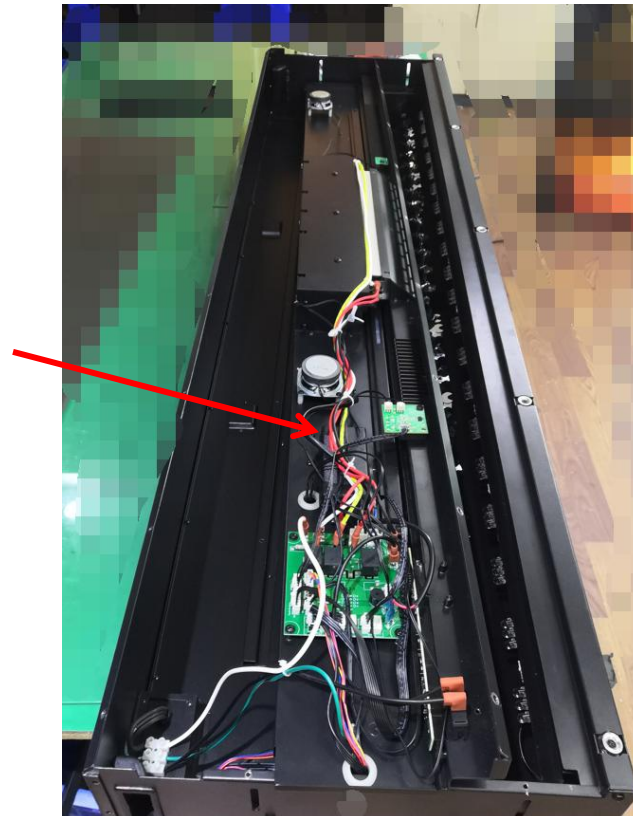


# Replace the AC adapter

Follow STEP 1 in Replace the heating element.



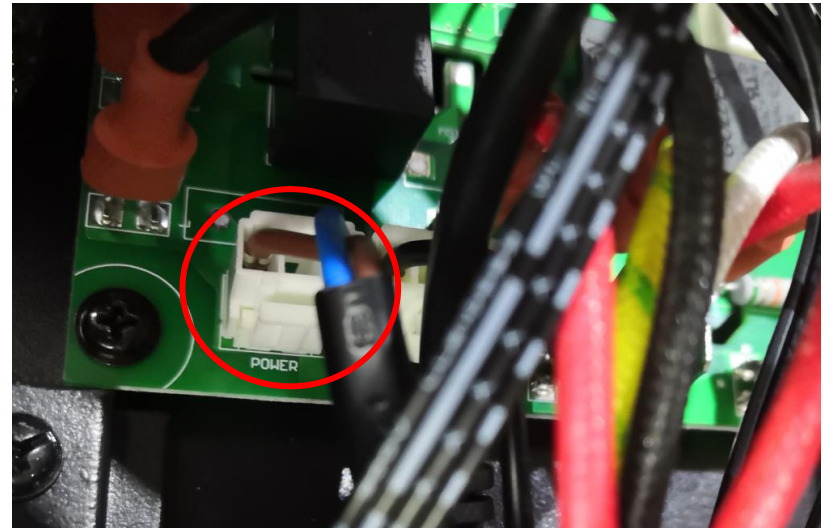
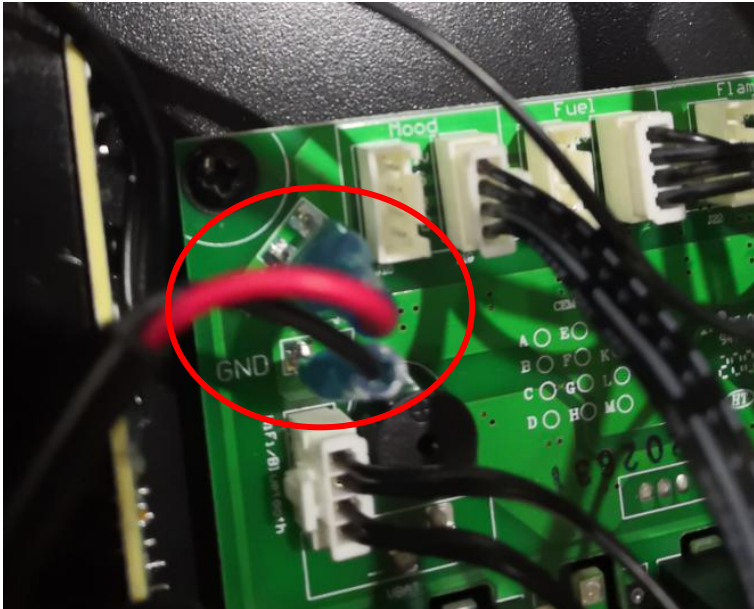
AC ADAPTER





# Step 1

The AC adapter is connected to the circuit board using a molex connector. Follow the lead from the AC adapter back to the board and disconnect it from the circuit board. A new receiver can be connected to the circuit board then secured to the inner top of unit.



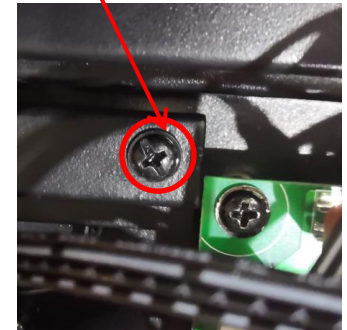
# Replacing the Canopy light

Follow STEP 1 to 4 from Replacing the heating element to take off the inner top panel.

The canopy light assembly



**Step 1** Remove the screws circled in red to disconnect the canopy light assembly from the inner top panel.





**Step 2** Loosen the pressed layering. Unplug the canopy light from molex connector that is attached to the circuit board. A new Canopy light can now be installed.



Unplug